

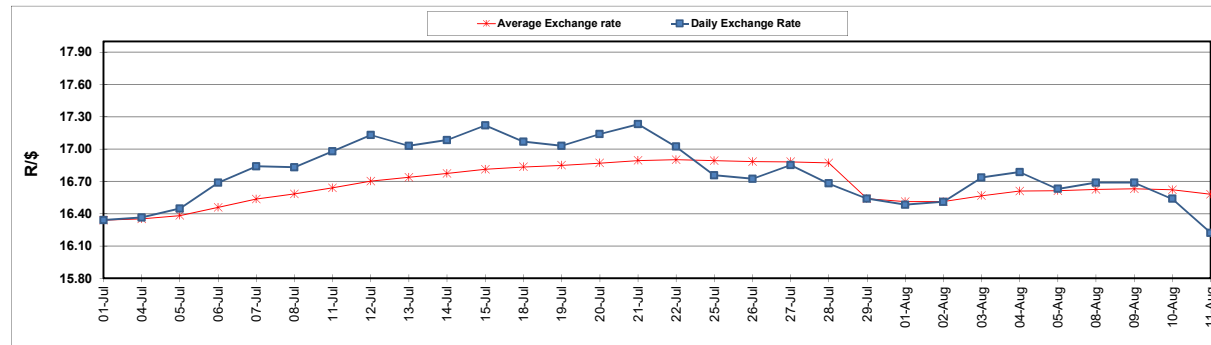
	PETROL 95 ULP	PETROL 93 ULP & LRP	DIESEL 0.05%	DIESEL 0.005%	ILL. PAR.
GAUTENG PUMP PRICE (SA c/l) AS FROM 03/08/2022	2,542.000	2,499.000	-	-	-
WHOLESALE PRICE (SA c/l) AS FROM 03/08/2022	-	-	2,452.440	2,461.840	1,842.288
SINGLE NATIONAL MAXIMUM RETAIL PRICE	-	-	-	-	2,431.000
BASIC FUEL PRICE - 11/08/2022 (SA c/l)	1,265.521	1,243.253	1,403.411	1,423.337	1,457.639
PRESS RELEASE CONTRIBUTION TO BFP 03/08/2022 - 11/08/2022 (SA c/l)	1,482.410	1,439.410	1,600.630	1,610.030	1,624.128
UNIT OVER/(UNDER) RECOVERY - 11/08/2022 (SA c/l)	216.889	196.157	197.219	186.693	166.489
AVERAGE BASIC FUEL PRICE 29/07/2022 - 11/08/2022	1,281.326	1,253.737	1,412.562	1,428.340	1,467.930
AVERAGE UNIT OVER/(UNDER) RECOVERY 29/07/2022 - 11/08/2022	263.184	247.774	236.968	231.490	199.398

### ANALYSIS MOVEMENT OF AVERAGE OVER/(UNDER) RECOVERY

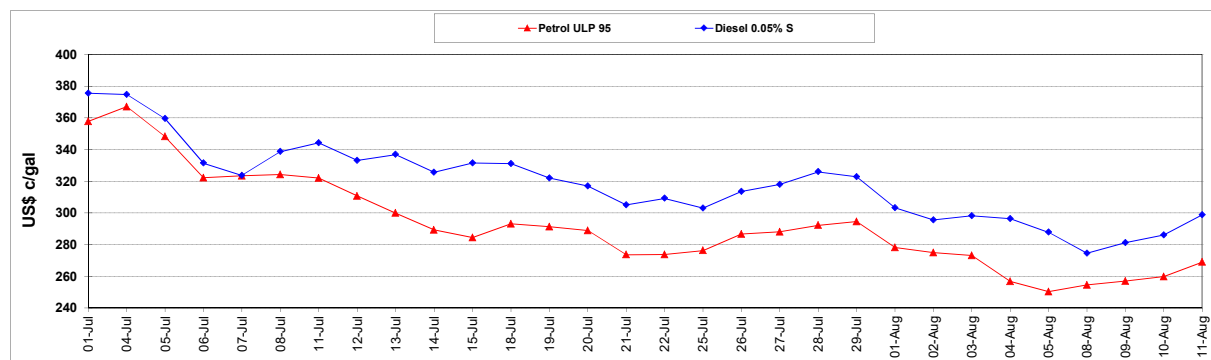
	PETROL 95	PETROL 93	DIESEL 0.05%	DIESEL 0.005%	ILL. PAR.
- MOVEMENT IN INTERNATIONAL PRODUCT PRICES	240.751	225.823	212.238	206.484	173.698
- MOVEMENT IN EXCHANGE RATE	22.433	21.950	24.730	25.006	25.700
AVERAGE UNIT OVER/(UNDER) RECOVERY 29/07/2022 - 11/08/2022	263.184	247.774	236.968	231.490	199.398

### R/\$ EXCHANGE RATE - (R/\$16.2220 - 11/08/2022)

#### EXCHANGE RATE USED IN BASIC FUEL PRICE



#### INTERNATIONAL PRODUCT PRICES OF BASKET USED IN BASIC FUEL PRICE



#### BASIC FUEL PRICE IN SA CENTS PER LITRE

